

20/F FLAT NORTH | 20樓 NORTH 單位

One-bedroom 一房

SALEABLE AREA
實用面積

360 ft²
平方呎

(including balcony, utility platform and verandah, if any)
包括露台、工作平台及陽台(如有)

BALCONY
露台

30 ft²
平方呎

FURNITURE LIST 家具清單

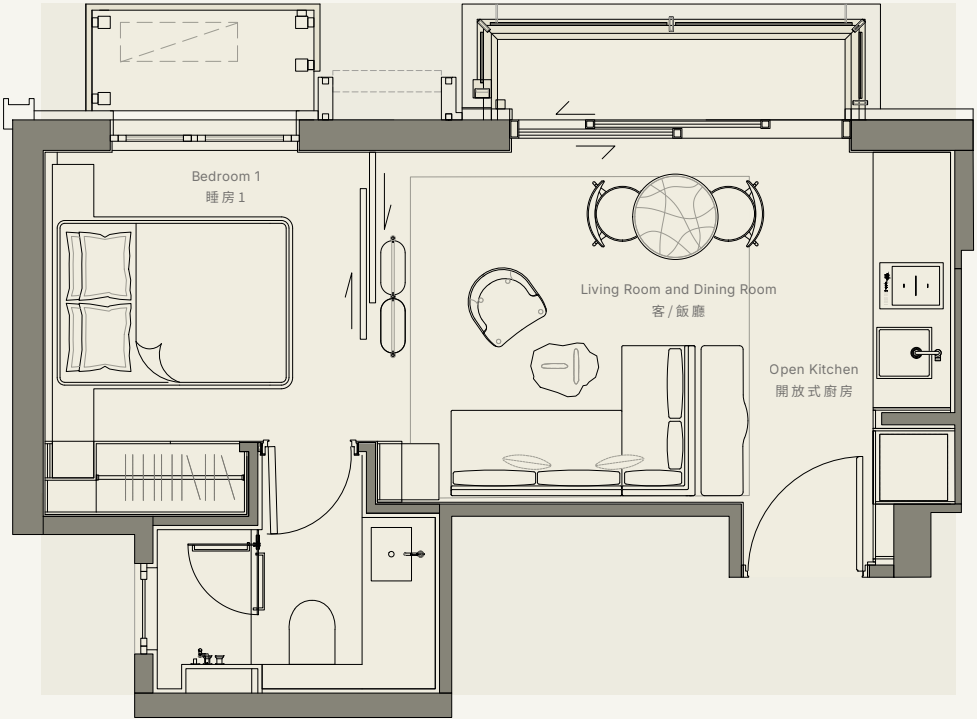
20/F FLAT NORTH (ONE-BEDROOM)
20樓 NORTH 單位 (一房)

Living Room and Dining Room 客/飯廳	Length (mm) 長 (毫米)	Wide (mm) 寬 (毫米)
Dining Table 餐桌	700	700
Dining Chair 餐椅	550	580
Sofa 沙發	1230	2000
Coffee Table 茶几	440	555
Rug 地毯	2780	2630
Shoe Cabinet 鞋櫃	340	1230
Armchair 扶手椅	650	600
Open Shelf 開放式層架	200	1000
Built-in Cabinet 嵌入式儲物櫃	500	500

Open Kitchen 開放式廚房	Length (mm) 長 (毫米)	Wide (mm) 寬 (毫米)
Built-in Kitchen Cabinet with Fridge 嵌入式廚櫃連雪櫃	620	670
Built-in Kitchen Cabinet 嵌入式廚櫃	450	170

Bedroom 1 睡房 1	Length (mm) 長 (毫米)	Wide (mm) 寬 (毫米)
Bed 床	1900	1350
Headboard 床頭板	2275	60
Night Stand 床頭櫃	310	365
Built-in Wardrobe 嵌入式衣櫃	1655	600

The dimensions of the furniture set out above are for reference only.
上述所列之家具尺寸僅供參考。



This furniture layout plan is for reference only.
此家具佈局圖僅供參考。

Remarks:

- The areas as specified above have been converted to square feet based on a conversion rate of 1 square metre = 10.764 square feet and rounded to the nearest whole square foot.
- The saleable area and the floor area of balconies, utility platforms and verandahs (if any) are calculated in accordance with section 8 of the Residential Properties (First-hand Sales) Ordinance and the areas of other specified items (not included in the saleable area) are calculated in accordance with Part 2 of Schedule 2 of the Residential Properties (First-hand Sales) Ordinance.
- The internal areas of the residential properties on the upper floors will generally be slightly larger than those on the lower floors because of the reducing thickness of the structural walls on the upper floors.
- For details of the floor plan of the relevant residential property, please refer to the sales brochure.

備註：

- 以上所列面積以1平方公尺=10.764平方英尺的換算率換算為平方英尺，並四捨五入至最接近的整數平方英尺。
- 實用面積及露台、工作平台及陽台(如有)的樓面面積是按照《一手住宅物業銷售條例》第8條計算，而其他指明項目的面積(未計入實用面積)是按照《一手住宅物業銷售條例》附表2第2部計算。
- 因住宅物業的較高樓層的結構牆的厚度遞減，較高樓層的內部面積，一般比較低樓層的內部面積稍大。
- 有關住宅物業平面圖的詳情，請參閱售樓說明書。